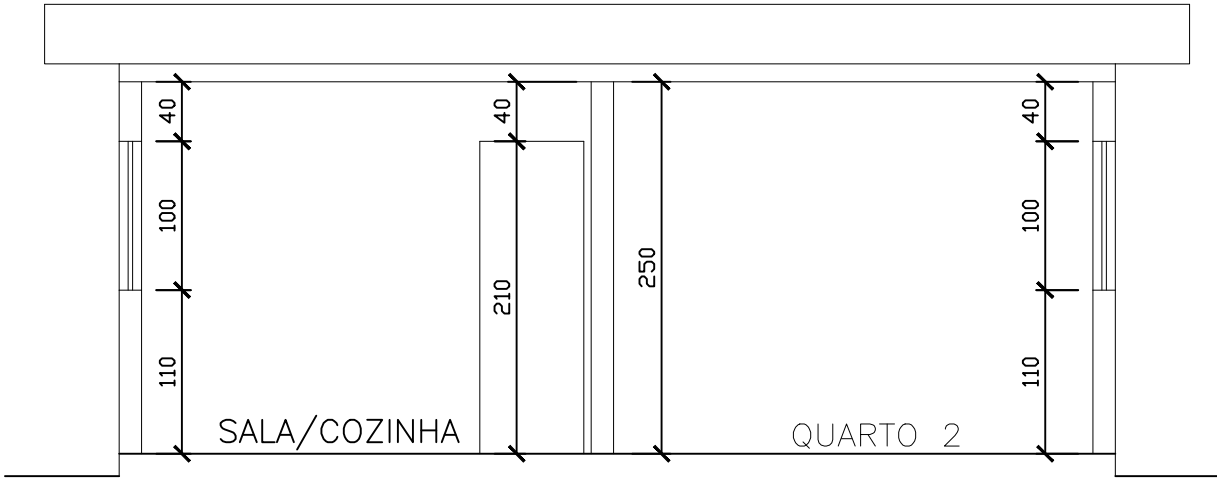
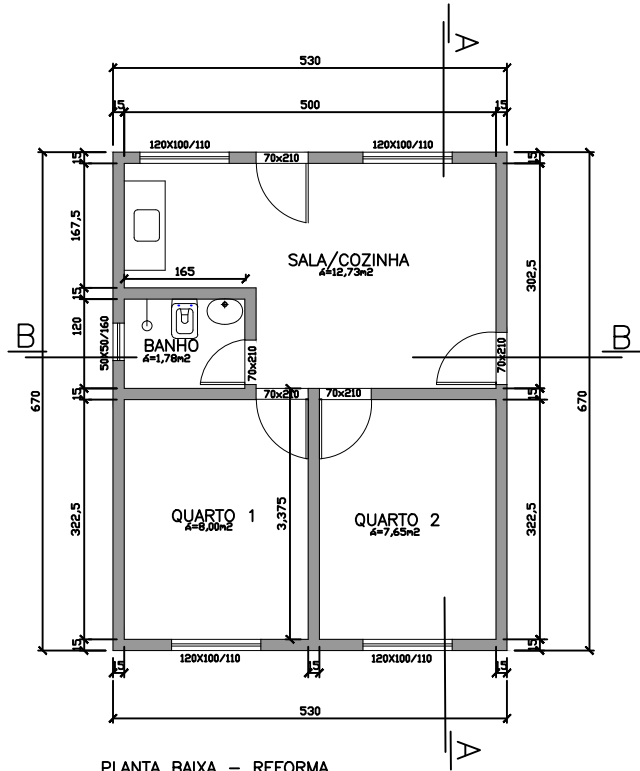


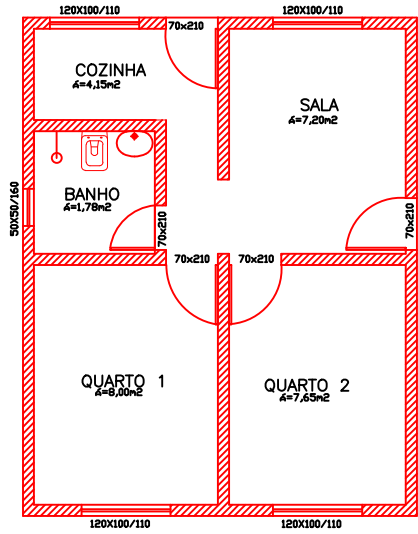
CORTE B-B
ESC. 1:50



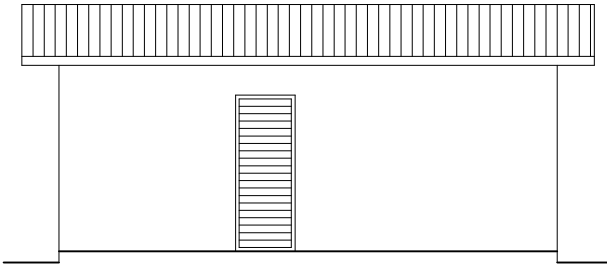
CORTE A-A
ESC. 1:50



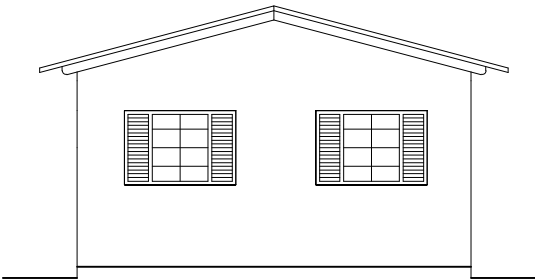
PLANTA BAIXA - REFORMA
ESC. 1:100



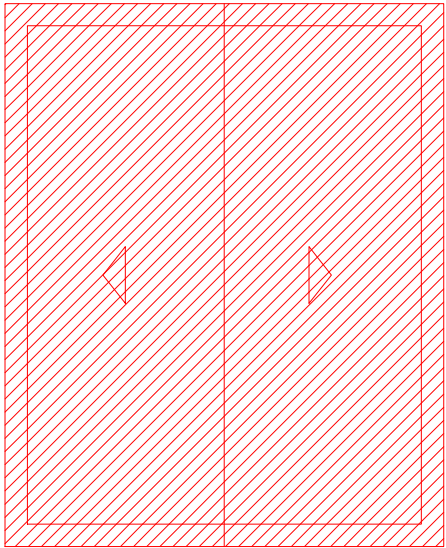
PLANTA BAIXA - DEMOLIÇÃO
ESC. 1:100



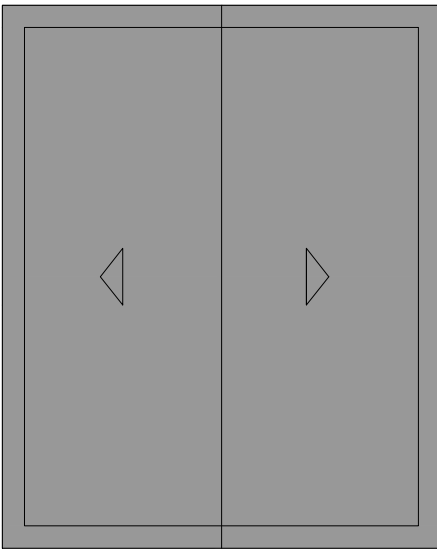
FACHADA LATERAL
ESC. 1:100



FACHADA FRONTAL
ESC. 1:100





COBERTURA - DEMOLIÇÃO
ESC. 1:100



COBERTURA - REFORMA
ESC. 1:100

LEGENDA

-  A DEMOLIR: PLACAS PRÉ-MOLDADAS
-  A CONSTRUIR: BLOCOS CERÂMICOS



RESPONSÁVEL TÉCNICO: PHILIPJOHN RIBEIRO SILVA

CREA: 1016927460/AP-GO

ARQUITETÔNICO

TIPO:	REFORMA RESIDÊNCIA UNIFAMILIAR – CONJUNTO HABITACIONAL (Para os Lotes de 11 à 12)	DATA:	JUNHO/2018
LOCAL:	VILA TEOTÔNIO VILELA	ÁREAS	CONSTRUÍDA: 35,50 m²
ENDEREÇO:	RUAS RODOLFO LUCAS, 02, 08, CASTRO ALVES, RESISTÊNCIA, JOSÉ DE ANCHIETA E OLAVO BILAC	TERRENO: XX m²	T.O.: – %
DESCRIÇÃO:	PLANTA BAIXA DEMOLIÇÃO/REFORMA	ESCALA	INDICADAS
	FACHADAS	PRANCHA	1/4
	CORTES		